

SEYMOUR  
PERFORMERS  
WORKSHOP

YOUTH THEATRE SCHOOL



ROALD DAHL'S

# Matilda

THE MUSICAL JR.

AUDITION PACK

# JOIN THE REVOLT!

## Seymour Performers Workshop Youth Theatre School presents Roald Dahl's MATILDA JR.

---

Do you love to sing, dance, act — or work your magic behind the scenes? Then get ready for a revoltingly brilliant opportunity!

Join us for an unforgettable journey into the world of Roald Dahl's Matilda Jr., a gleefully witty, high-energy musical packed with magic, mischief, and a whole lot of heart.

Our 14-week program run by qualified teaching instructors, will offer opportunities to learn musical theatre and stagecraft skills in a fun, safe and inclusive environment as we rehearse together to bring the magical world of Matilda to the stage.

Auditions for onstage roles will be open to students aged 8 – 18 years of age and will be held on 31 January and 1 February 2026.

We also have a range of opportunities for young people aged 12 – 25 to get involved in **backstage roles** - from set building, lighting, sound and costumes to front of house, photography, videography and much more. Please complete this form and we will be in touch – [CLICK HERE.](#)

Whether you're born for the spotlight or curious about the magic behind the curtain, Matilda Jr. is your chance to shine, learn new skills and make lasting memories.

Use this information pack to find out more about the program, what is required and how to get involved.



# ABOUT THE SHOW



Rebellion is nigh in Matilda JR., a gleefully witty ode to the anarchy of childhood and the power of imagination! This story of a girl who dreams of a better life and the children she inspires will have audiences rooting for the "revolting children" who are out to teach the grown-ups a lesson.

Matilda has astonishing wit, intelligence... and special powers! She's unloved by her cruel parents but impresses her schoolteacher, the highly loveable Miss Honey. Matilda's school life isn't completely smooth sailing, however – the school's mean headmistress, Miss Trunchbull, hates children and just loves thinking up new punishments for those who don't abide by her rules. But Matilda has courage and cleverness in equal amounts, and could be the school pupils' saving grace!

This show is a 1-act version of the full show (run time about 1 hour).

We are looking for actors aged 8 to 18 at the time of shows in May 2026.

# KEY DATES

SATURDAY	31/01/2026	AUDITIONS
SUNDAY	01/02/2026	AUDITIONS
WEDNESDAY	04/02/2026	CALLBACKS (if required)
SUNDAY	08/02/2026	VOCAL INTENSIVE 1
SUNDAY	15/02/2026	VOCAL INTENSIVE 2
SUNDAY	22/02/2026	VOCAL INTENSIVE 3
SUNDAY/WEDNESDAY	01/03/2026 – 12/04/2026	REHEARSALS ONGOING Sundays will be 10am–5pm (as called) We will endeavor to limit calls on Wednesday evenings but please keep them available.
FRIDAY	17/04/2026	SCHOOL HOLIDAY INTENSIVE
SATURDAY	18/04/2026	SCHOOL HOLIDAY INTENSIVE
SUNDAY	19/04/2026	SCHOOL HOLIDAY INTENSIVE
SUNDAY	26/04/2026	STAGE REHEARSAL (evening)
WEDNESDAY	29/04/2026	STAGE REHEARSAL (evening)
SUNDAY	03/05/2026	FULL TECH RUN
TUESDAY	05/05/2026	1 <sup>st</sup> FULL DRESS REHEARSAL (evening)
THURSDAY	07/05/2026	2 <sup>nd</sup> FULL DRESS REHEARSAL (evening)
SATURDAY	09/05/2026	OPENING NIGHT 1 <sup>st</sup> PERFORMANCE (evening)
SUNDAY	10/05/2026	2 <sup>nd</sup> PERFORMANCE (matinee)* *(potential additional show)
THURSDAY	14/05/2026	Mid show run rehearsal (evening)
SATURDAY	16/05/2026	DOUBLE SHOW DAY 3 <sup>rd</sup> & 4 <sup>th</sup> PERFORMANCE (matinee and evening)
SUNDAY	17/05/2026	CLOSING NIGHT 5 <sup>th</sup> PERFORMANCE (matinee) BUMP OUT & CAST CELEBRATION



# AUDITIONS FOR ONSTAGE ROLES

---

Onstage roles will be allocated via an audition process. The auditions will be held at the Seymour College Arts Centre, Cnr of Loco and Anglesey Streets, Seymour.

The available audition times are:

- Saturday 31 January 2026: 11am, 12pm, 2pm, 3pm
- Sunday 1 February 2026: 11am, 12pm, 2pm, 3pm
- Callbacks will be held at 7.00pm on Wednesday 4th February 2026 if required.

**TO BOOK YOUR AUDITION SPOT PLEASE [CLICK HERE](#).**

The first 45 minutes of the audition will consist of a group audition where you will meet fellow auditionees, hear from the production team and then engage in a combination of activities that will assess your acting, singing and dancing abilities.

All auditionees are asked to learn the cut of 'Naughty' included below and come ready to sing it for the audition panel.

Auditionees will be asked to sing in a group and on their own with a backing track.

We know that auditions are challenging. The audition panel commits to conducting auditions in a respectful and supportive manner. We want you to be comfortable during your audition.

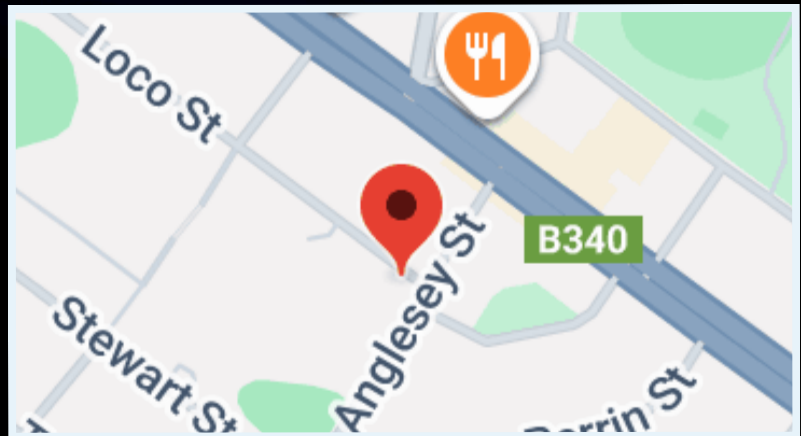
SPW is committed to creating an inclusive and diverse creative environment and we welcome all auditionees of any race, ethnicity, religion, color, gender, gender expression, sexual orientation, or disability to submit for the roles.

# GETTING READY



## WHAT DO I EXPECT?

- Auditions will be held at the Seymour College Arts Centre on the corner of Anglesey and Loco St.
- You will audition in a group of up to 15 people.
- You will meet the production team.
- The group will sing a cut of 'Naughty' all together.
- Everyone will sing a cut of 'Naughty' on their own.
- Everyone will learn a short dance together.



## WHAT CAN I PREPARE?

You can make sure you have learnt the song before you arrive.

Make sure you wear comfortable clothes you can move in and sensible shoes you can dance in.

Arrive early enough to have some deep breaths and a drink of water.





**'NAUGHTY'  
VOCAL TRACK**



# AUDITION SONG

**'NAUGHTY'  
ACCOMPANIMENT**



## **'NAUGHTY' LYRICS**

*Sometimes you have to be a little bit  
naughty!*

*Just because you find that life's not fair, it  
Doesn't mean that you just have to grin and  
bear it*

*If you always take it on the chin and wear it  
nothing will change*

*Even if you're little you can do a lot, you  
Mustn't let a little thing like "little" stop you  
If you sit around and let them get on top,  
you*

*Might as well be saying you think that it's  
okay*

*And that's not right  
And if it's not right, you have to put it right*

*But nobody else is gonna put it right for me  
Nobody but me is gonna change my story  
Sometimes you have to be a little bit  
naughty!*







# SHOW COMMITMENT



Seymour Performers Workshop is committed to providing high quality performance and production experiences to its members and audiences. It is our aim as an organisation that everyone associated with our group has a positive experience in a safe, respectful, inclusive and harmonious working environment.

Staging a major musical is an enormous undertaking that takes many hours of work behind the scenes from volunteers, and a significant financial investment from the organisation. We ask all involved with our productions to help support us and work together to achieve our goals.

If you are offered a place in the production, you must be a current member of SPW to participate. Annual membership fees are **\$20 for individuals** and **\$50 for a family**. Members receive a \$5 discount on tickets to any SPW production in the year of their membership. Find out more here: **[Membership & Support](#)**

In addition, a **show fee of \$85pp** is payable by the first week of rehearsals for all people with onstage roles. This includes a Matilda Jnr t-shirt to be worn during rehearsals.

*If you have any difficulties with the above costs, please contact the Producers to organise alternative arrangements.*



## **DIRECTOR/CHOREOGRAPHER**

Kimberley Read

Kimberley began her dance career at the age of 4 at Tallarook Dance Academy. Finding her passion early in life she went on to complete a Bachelor of Creative Arts (Dance) and a Master of Teaching. She worked as an assistant choreographer on the Victorian State Schools Spectacular for many years before leaving the lights to become a primary school teacher. Kimberley has been involved in SPW since it's beginnings in 2003 both on and off the stage. Matilda is one of Kimberley's favourite stories and she can't wait to bring this magical show to life with your help!

## **CASTING PANEL**



**SARAH D'ORRIA**  
Co-Producer



**JULIE BLYTH**  
Co-Producer



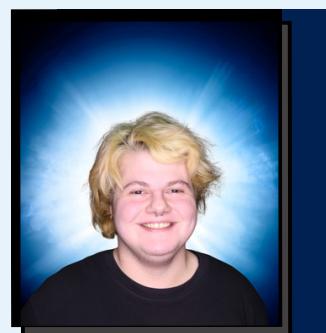
**MADELEINE LEZON**  
Assistant Director



**FINDLAY EDWARDS**  
Assistant Choreographer



**LUCY PENNINGTON**  
Music Mentor



**MISHA RIDLEY**  
Music Director

# CHARACTERS:

## THE 'MAGGOTS'

Character	Stage Presentation	Vocal Range	Stage Age	Notes
<b>Matilda Wormwood</b>	Female	Bb3–D5	8–10	The hero of the show. She's brilliant, resilient, creative, and kind, despite growing up in difficult circumstances. Her parents treat her poorly, but Matilda escapes into a world of books, which puts her reading level far above the other children in her class, and she develops a bit of magical power in an effort to defeat Trunchbull.
<b>Eric</b>	Male	C3–Eb4	8–10	A student at school with Matilda. He has the very first solo line of the entire show! He is expressive, sweet and loyal. He also has some featured moments as one of Matilda's schoolmates.
<b>Amanda</b>	Female	C4–Eb5	8–10	A student at school with Matilda. She has a few solos and lines, but her most featured moment is when Trunchbull throws her through the air using her pigtails.
<b>Bruce</b>	Male	C3–F#4	8–10	One of Matilda's schoolmates. He has the bad luck to get caught after eating Trunchbull's cake. Bruce goes through quite a transformation throughout the show and has some important solos, so we are looking for an excellent singer and actor.
<b>Hortensia</b>	Female	C4–D5	9–11	Alice, Hortensia, and Tommy are classmates of Matilda who each sing solos, and Hortensia has a few lines.
<b>Alice</b>	Female	C4–D5	9–11	Alice, Hortensia, and Tommy are classmates of Matilda who each sing solos.
<b>Tommy</b>	Male	C3–Eb4	9–11	Alice, Hortensia, and Tommy are classmates of Matilda who each sing solos.
<b>Lavender</b>	Female	C4–D5	8–10	One of the kids at school with Matilda. She is kind and bright (though not as brilliant as Matilda) and quickly decides that Matilda is her best friend.
<b>Nigel</b>	Male	C3–D4	8–10	One of the kids at school with Matilda. He is enthusiastic, sweet, and always in a bit of a panic.
<b>Michael</b>	Male	—	10–13	Matilda's brother. He is not very bright, but he is the apple of his father's eye. A hilarious supporting role for someone with strong comedic timing. No singing in this role - but heaps in the ensemble!



# CHARACTERS:

## THE 'GROWN UPS'

Character	Stage Presentation	Vocal Range	Notes
Miss Honey	Female	Bb3–D5	A teacher at Matilda's school. She is kind, is generous, and really cares about the children despite her own desperate circumstances. It's helpful if the actress reads as older than the kids from onstage.
Agatha Trunchbull	Female	C4–F#5	The quintessential terrifying tyrant. As headmistress, she runs her school like a dictator, making up arbitrary rules to suit her every whim and dreaming up creative punishments. The Trunchbull can be played by a male or female (though the character is female). It's helpful if Trunchbull is physically larger than the actors playing children. We are looking for a fantastic character actor and singer.
Mr. Wormwood	Male	—	Matilda's father. He is egotistical, rude, and not very bright, not to mention a liar. Though Mr. Wormwood is not a good person and he is mean to Matilda, his harebrained schemes can be hilariously funny, so we are looking for a fantastic character actor in this role who can really land the comedy and isn't afraid to play an unlikeable character.
Mrs. Wormwood	Female	—	Matilda's mother. Like her husband, she dislikes Matilda and does not understand why her daughter loves to read. Mrs. Wormwood is selfish, obsessed with her own appearance, and believes everything she sees on TV. Her dancing lessons with Rudolpho are the most important part of her day. We are looking for a great actress who can portray Mrs. Wormwood's nastiness but also play up her ridiculousness and lean into the comedy.
Mrs. Phelps	Female	—	The kindly librarian who loves hearing Matilda's stories. This is a great featured role for a stronger actress who reads as older than Matilda onstage.
Escapologist	Male	E3–F3	A character of Matilda's creation. Everything this character does is grand and exaggerated – he's performing for the cheap seats!
Acrobat	Female	D4–A4	A product of Matilda's imagination.
Rudolpho	Male	—	Mrs. Wormwood's self-obsessed dance teacher. This is a hilarious featured role for a comedic performer who moves well.
Sergei	Male	—	A customer swindled by Mr. Wormwood. Though he shows up looking for payback, Matilda has had quite enough of revenge, and Sergei lets the Wormwoods escape. This is a great featured role for an actor who can embody Sergei's intimidating presence.

# INFORMATION FOR YOUR GROWN UPS

- Parents will be asked to either 'Kiss & Go' (drop children at rehearsals and come back later) or wait in the foyer for the duration of rehearsals. This will allow the Youth Theatre School instructors the time and space to create magic with your children on stage. We thank you in advance for respecting this.
- All participants will be involved in co-creating a behaviour expectations agreement with teachers. All children will be required to follow the behaviour agreement.

All cast members will be expected to:

- Be available for all required rehearsals and performances, unless otherwise discussed with the production team. If children miss a rehearsal, they may not be involved in the number that is worked on during that rehearsal. If a child misses more than 3 rehearsals they may be asked to withdraw from the show.
- Agree to abide by the Seymour Performers Workshop Code of Conduct. Please go to [www.spworkshop.org.au/about](http://www.spworkshop.org.au/about) to read this.
- Obtain and provide evidence of a working with children check if 18 or more years of age – this can be obtained for free. Please visit [www.workingwithchildren.vic.gov.au](http://www.workingwithchildren.vic.gov.au) for more information.
- Pay your membership and show fees by the first week of rehearsals (please speak with us if this presents any difficulties for you and we can discuss some alternative options).
- Where possible we would like cast members and their grown ups to assist SPW with promotions and fundraising to help support our group and production. This may include distributing posters, sharing social media posts and any other fundraising and promotional activities that may be undertaken.

# FREQUENTLY ASKED QUESTIONS

---

## **I'M UNAVAILABLE FOR THE AUDITION DATES – CAN I STILL AUDITION?**

If you are not available on either of the audition dates, please contact [info@spworkshop.org.au](mailto:info@spworkshop.org.au) to organise a video or make-up audition.

## **WHEN WILL I FIND OUT THE OUTCOME OF MY AUDITION?**

SMS and phone call offers are made by the production team as soon as possible. We ask that you confirm your acceptance within 24 hours after the offer is made.

## **WHAT CAN I EXPECT AT REHEARSALS?**

The production team is dedicated to fostering a secure and cooperative work environment, and we will be there for you at every turn. We need everyone to be on time and ready to go at the scheduled call time.

## **I'M UNAVAILABLE FOR SOME OF THE REHEARSALS. CAN I STILL BE INVOLVED?**

All cast members are expected to attend every rehearsal they are called for unless they are unwell or have informed the production team at the casting stage. During the audition process, you will be asked to indicate any unavoidable unavailabilities in the audition form. If cast members are away for more than 3 rehearsals they may be taken out of production numbers. If there is continued absenteeism they may be asked to leave the show.

## **WILL THERE BE REHEARSALS OR SHOWS ON LABOUR DAY LONG WEEKEND / MOTHER'S DAY/SCHOOL HOLIDAYS?**

There is a rehearsal scheduled for the Sunday of the long weekend in March (8 March, 2026). If you do not think you can attend on this date, please let us know at the audition. There will be a compulsory school holiday intensive. There is a performance scheduled on Mother's Day (10 May, 2026). Attendance is compulsory for this date.

## **AM I EXPECTED TO HELP WITH BUMP-IN AND BUMP-OUT?**

Yes please! Many adult hands make light work and we are always looking for more helpers. Specific roles and responsibilities will be worked out a little closer to the time. Children will be invited to watch the Matilda movie in the back classroom while the adults are bumping out, for safety reasons.

## **I HAVE OTHER QUESTIONS, WHO CAN I CHAT WITH?**

If you have questions about the casting process, rehearsals, or the production plans please email [info@spworkshop.org.au](mailto:info@spworkshop.org.au)





**COMING MAY 9 - 17  
2026**

[www.spworkshop.org.au](http://www.spworkshop.org.au)

• [info@spworkshop.org.au](mailto:info@spworkshop.org.au)

Seymour Performers Workshop acknowledges the Taungurung people, who are the Traditional Custodians of the land on which we meet and perform. We pay our respects to Elders past and present and their enduring connection to Country, skies, waterways and stories.